



Answering your daily challenges in
the laboratory

best 2000
Biokit ELISA system



INFECTIOUS DISEASES

 **Biokit**
A Werfen Company

bioelisa

best 2000 4-Plate ELISA Processing System

The best2000 is a fully-automated, 4-plate processing system that is capable of performing multiple assays per plate. The best2000's modular design provides flexible configuration and was developed with ease-of-use in mind. The best2000 incorporates many features that ensure the quality and security of results and has the performance to handle a wide variety of assays. Simply put, the best2000 offers flexible and reliable sample-in/result-out processing for true walkaway automation.



Modularity

best2000's modular design facilitates upgrades, repairs and reconfiguration. The following modules, which can be quickly and easily removed and/or installed, are available:

- a. Reader
- b. Washer
- c. Incubators (space for four)
- d. Sample ID
- e. Ambient Drawer
- f. Electronics Pod (standard)

Simple Upgrades - As your laboratory needs grow, the best2000 can be easily upgraded by sliding a new module into an existing position.

Simple Repairs - Minimize the impact on your lab's operations and throughput. Most best2000 repairs do not require a service technician and literally take minutes to complete, saving you both time and money.

Ease-of-Use

The best2000 is simplicity at its finest. Installation, programming, assay set-up and daily maintenance are all designed to keep you focused on your results, not on the instrument.

- **Installation** – Factory trained staff can have your best2000 up and running in just a few hours.
- **Software** – Revelation® data analysis software offers a graphical user interface with intuitive Windows®-based operation. The following advanced features facilitate assay performance:
 - The Data Reduction Wizard simplifies the programming of even the most complex assay configurations and calculations.
 - Online Help is available to assist with assay set-up and programming.
- **Worklist Set-Up** – The Worklist Load Wizard walks you through the process of setting up the best2000 worklist, graphically showing where to place reagents, samples and plates at the beginning of each run.
- **Maintenance** – Daily maintenance can be completed in just a few minutes, including removal of consumables and rinsing the washer.



System Specifications

General	Number of plates	4
	Sample capacity	96 per load
	Continuous load	Yes
	Sample-tube size	Short rack: 40-75 mm
		Long rack: 75-100 mm
	Reagent-fluid capacity	24 x 25 mL bottles
	Control-fluid capacity	33 x 2 mL vials
	Dilution capacity	2 x (96) 12 x 8 deep-well strips or 2 dilution plates
	Sample-tip capacity	4 x 108 tips
	Reagent-tip capacity	41 tips
	Assays per plate	Up to 12
	Self-test on startup	Yes
	Incubator	Temperature range
Temperature uniformity		+/- 1°C
Shaking		>15 Hz periodic or continuous
Process security	Liquid-level sensing	Yes
	Level-sensor system	Pressure differential
	Clot detection	Yes
	Foam detection	Yes
	Tip detection	Yes
	Well-fill verification	Yes
Reader	Dynamic range	0 – 3.0 OD
	Spectral range	405-690 nm
	Filter slots	6
	Read time	<10 sec (single wavelength)
		<20 sec (dual wavelength)
	Precision	<1% CV (at 0.501 to 2.000 OD)
	Accuracy	<1.5% CV (at 2.001 to 2.500 OD)
+/- 0.01 OD or 2.5%		
Washer	Manifold	8-way
	Dispense-volume range	50-999 ul
	Wash-buffer capacity	4 x 2 L
Pipetting	Precision sample tip	<3% CV (above 10ul)
	Precision reagent tip	<3% CV (at 10 shots at any volume above 50ul)
Physical	Power	100 – 240 Volts AC
		50/60 Hz
	Dimensions	42"W x 36"D x 32"H (106 x 91 x 80 cm)
Weight	300 lbs (136 kg)	

Answering your daily challenges in the laboratory



- ▲ **Ease-of-use**
- ▲ **Modular**
- ▲ **Flexible**
- ▲ **Reliable**

Ordering Information

best2000 w/o SID

Cod. 3710-0342

Scanner module for best2000

Cod. 3410-0570



Answering your daily challenges in
the laboratory

DS2
Biotek ELISA system



INFECTIOUS DISEASES

 **Biokit**
A Werfen Company

bioelisa

DS2® 2-Plate ELISA Processing System

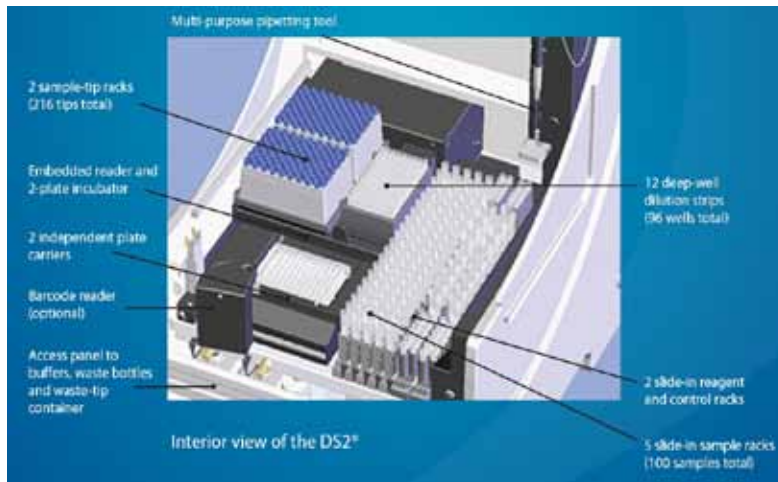
Designed with full walkaway capability, DS2® quickly and easily processes two 96-well microplates and up to 12 different assays simultaneously. The system also features a user-friendly control system, chain of custody management and on-board instrument diagnostics.

DS2 delivers sample-in/results-out automation of microplate assays:

- Sample dilution and distribution
- Incubation, washing and reagent dispensing
- Reading with automatic data reduction and quality control
- Automatic barcode scanning

DS2 has the comprehensive capability needed to ensure the rigorous, repeatable analysis required to deliver the most accurate results.

Specifications

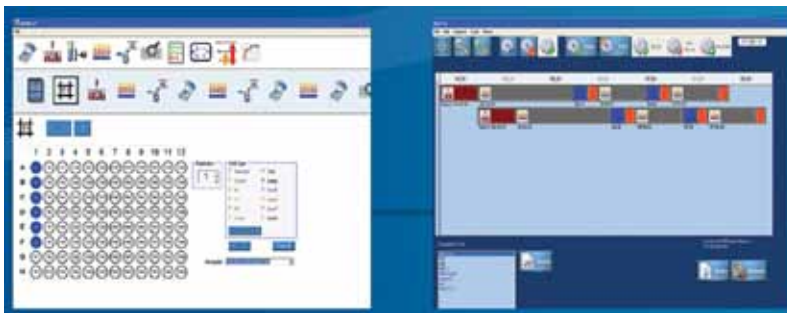


DS2® makes automation easy

The system uses a multi-function robot arm that does everything from pipetting to operating the barcode reader. In addition, DS2's vertical design and patented multi-plate carrier save space, enabling a minimal footprint, with maximum consumable storage:

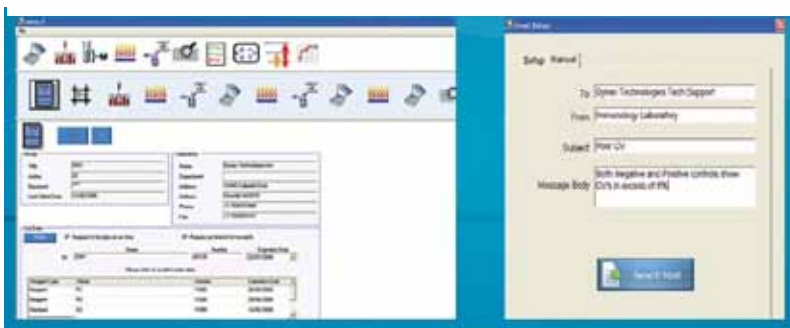
- 216 sample tips
- 96 dilution vessels in convenient 8-way strips
- 20 reagent tips
- 8 large and 10 medium reagent bottles
- 24 standard/control bottles

Software



Intuitive, Easy-to-Use DS-Matrix Software

Feature rich and groundbreaking in its process simulation and ease-of-use, DS-Matrix software powers DS2 allowing for rapid integration of this automation in the lab. The simple, graphical interface of DS2 can be operated by any lab technician with minimal training.



Worry-Free System assures Accurate Results

The DS2 system prompts you if any additional action is required. For example, if you need to add more reagents or wash fluids, you can set up DS2 to alert you with an audible alarm and/or an email outlining the problem. Integrated self-diagnostics make troubleshooting easy.

Answering your daily challenges in the laboratory



- ▲ **Compact**
- ▲ **Easy to use**
- ▲ **Intuitive**
- ▲ **Flexible**
- ▲ **Innovative**

Ordering Information

DS2

Cod. 3710-0342

T3100-9721 R01 MAR-2016

Living Immunoassay Excellence



Biokit

A Werfen Company



System Specifications

General	Number of plates	2
	Sample capacity	100 per load
	Continuous load	Yes
	Sample-tube size	10-16 mm diameter
		40-100 mm height
	Reagent-fluid capacity	8 x 25 mL bottles
		10 x 15 mL bottles
	Control-fluid capacity	24 x 2 mL vials
	Dilution capacity	(96) 12 x 8 deep-well strips
	Sample-tip capacity	216 tips
	Reagent-tip capacity	20 tips
	Assays per plate	Up to 12
	Selftest on startup	Yes
Incubator	Temperature range	Ambient + 4°C- 40°C
	Temperature uniformity	+/- 1°C across plate @37°C
	Shaking	Independent linear motion 14-20 Hz (periodic or continuous)
Process security	Liquid-level sensing	Yes
	Level-sensor system	Pressure differential
	Clot detection	Yes
	Foam detection	Yes
	Tip detection	Yes
	Well-fill verification	Yes
Reader	Dynamic range	0 – 3.0 OD
	Spectral range	405-690 nm
	Filter slots	6
	Reading channels	12 plus reference channel
	Read time	<30 sec (single wavelength)
		<50 sec (dual wavelength)
	Precision	<1% CV (<2 OD)
<1.5% CV (2.0-3.0 OD)		
Accuracy	+/- 0.005 OD or 2.5%	
Washer	Manifold	8-way
	Dispense-volume range	50-1000 ul
	Wash cycles	1-9 (repeatable)
	Wash-buffer capacity	2 x 2 L
Pipetting	Precision sample tip	<3% CV (10-200 ul)
	Precision reagent tip	<3% CV (20-1000 ul)
Physical	Power	100 – 240 Volts AC
		50/60 Hz
	Dimensions	21"W x 27"D x 26"H (54 x 68 x 66 cm)
Weight	105 lbs (48 kg)	