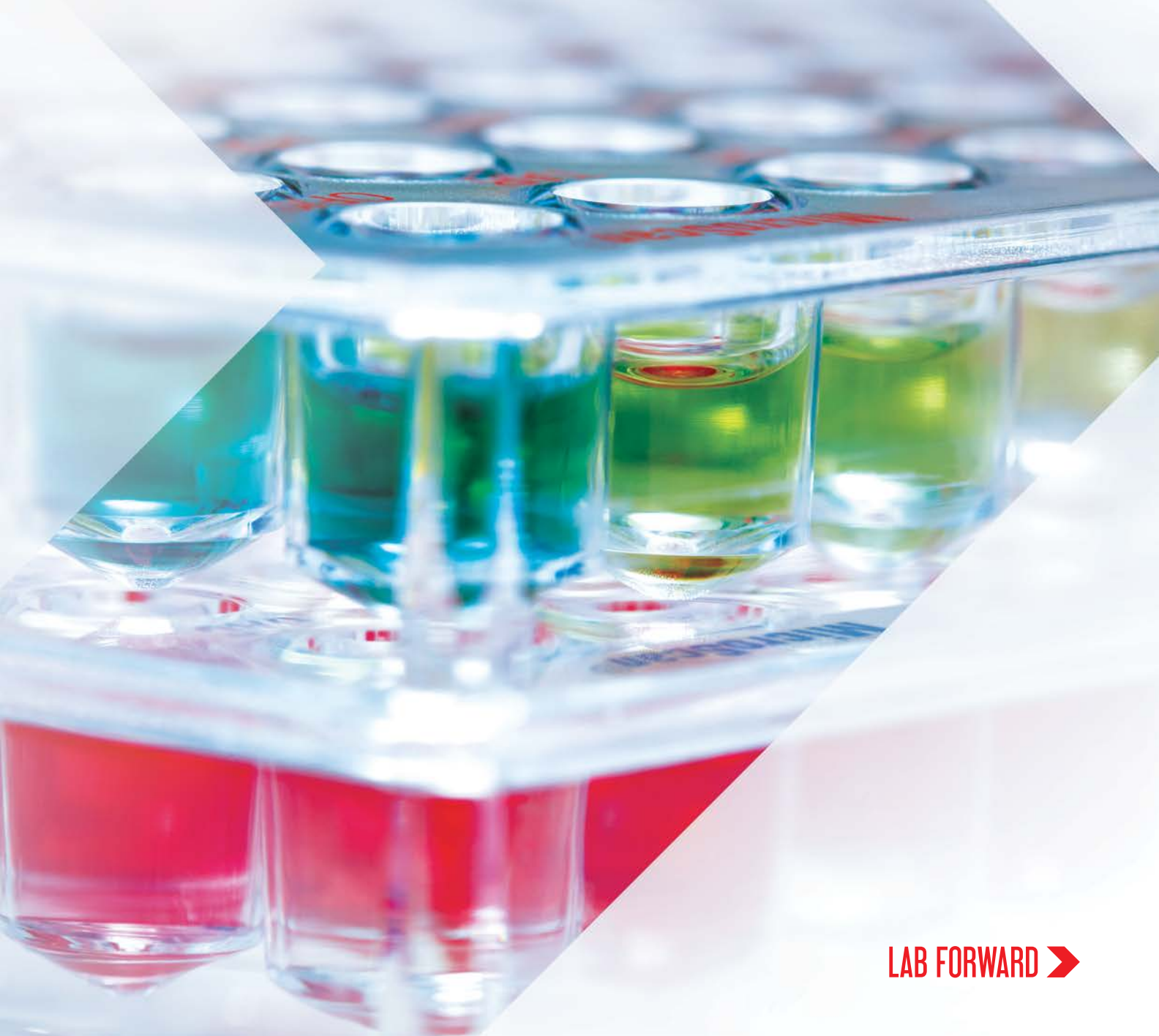




MicroScan Microbiology Systems

# ACCURACY IS SPEED

MicroScan answers the need for efficient patient care by delivering rapid, automated ID/AST results without sacrificing accuracy.



LAB FORWARD 



MicroScan WalkAway 96  
*Plus*



# ACCURACY IS SPEED

For more than 30 years, MicroScan microbiology products have been exclusively focused on ID/AST testing, offering unmatched experience, expertise, and technical support to provide you with accurate results the first time.

## Get answers right the first time.

### › Trusted detection

Advanced Minimum Inhibitory Concentration (MIC) technology detects emerging resistance as it occurs, providing accurate results without reliance on historical data or virtual MIC.

### › Accurate drug-bug performance

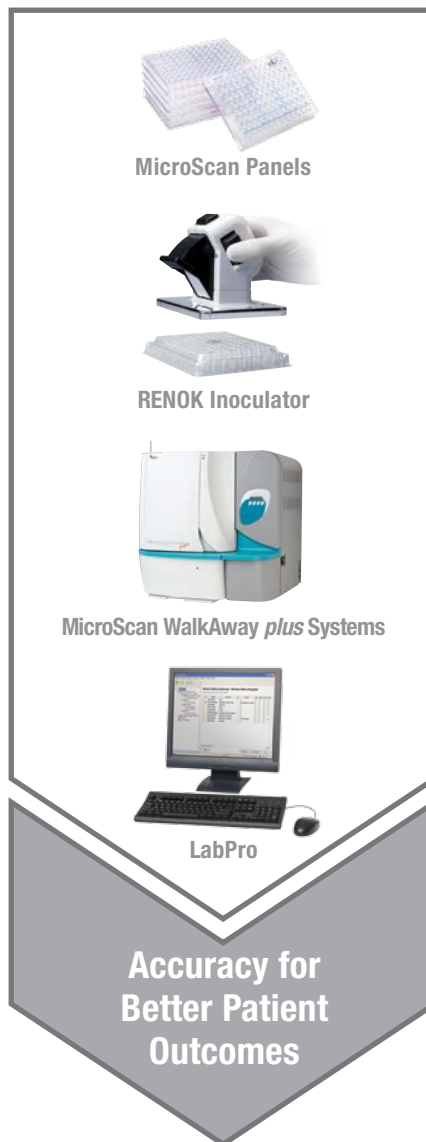
The fewest clinically significant drug-bug limitations of any automated ID/AST system result in fewer repeat and confirmatory tests.<sup>1</sup>

### › Powerful reporting

MIC and susceptibility results that correlate with classical broth microdilution and disk diffusion deliver answers the trusted way.<sup>2,3</sup>

### › Real-time alerts

LabPro Alert<sub>EX</sub> automates detection of atypical results for quick recognition and reporting.



MicroScan Panels

RENOK Inoculator

MicroScan WalkAway *plus* Systems

LabPro

Accuracy for Better Patient Outcomes

*“Overall, I feel the results are accurate. The identification accuracy I feel is superior. In the first year we had the MicroScan, we saved over \$70,000 in send-out costs alone because the MicroScan could identify isolates that our previous system could not.”*

Jennifer Blakeney, M.T. (ASCP),  
Lead Microbiology/Immunology  
Technologist,  
Beebe Medical Center Laboratory

Avoid confirmatory testing, retesting, and mistakes— all of which take time and interrupt workflow. MicroScan microbiology systems help you avoid delays through accurate first-time testing.

# ACCURATE SOLUTIONS FOR EVERY LAB

## MicroScan Systems

MicroScan provides high-quality performance and reliability—backed by over 30 years of ID/AST testing experience—for laboratories of every size. With this unmatched expertise comes the assurance that you are partnering with a company

that is capable of improving your laboratory processes and growing with you as your laboratory expands.

All MicroScan microbiology instruments use a single-panel format allowing for easy expansion into our powerful automated systems as the laboratory grows.



## Worldwide Trusted Quality

### MicroScan WalkAway plus Microbiology Systems

- › Ideal for mid- to high-capacity laboratories
- › Supports multiple workload needs with both 40- and 96-panel capacity models
- › Automated incubation, test interpretation, and reagent control
- › 20+ year history of reliability

## Proven Dependability

### autoSCAN-4 System

- › Ideal for small-capacity laboratories or backup testing
- › Automated read of bacterial ID and susceptibility in seconds
- › Supports testing for difficult and slow-growing species
- › Computerized system automatically records and interprets instrument results

**MicroScan microbiology systems have been rated #1 in “Overall Manufacturer Performance” for 9 consecutive years.<sup>3</sup>**

*“The MicroScan unit is an overnight testing system that is a true growth/no growth system, which gives you the most accurate results. It offers the flexibility of either a full MicroScan MIC panel or combination identification and susceptibility panel. The MicroScan [system] has been very consistent and reliable; it’s attested by the fact that we have 10 of them.”*

James Clark, M.T. (ASCP), Microbiology Manager, Alverno Clinical Laboratories

# RESISTANCE DETECTION DONE RIGHT

## MicroScan System Panels

Today's microbiology lab is continuously faced with change—change in antimicrobial resistance; change in formularies and therapies; change in the healthcare landscape. For over 30 years, MicroScan panels have provided gold-standard bacterial identification and susceptibility products, confronting emerging resistance with speed and accuracy. Count on MicroScan for unmatched experience, expertise, and selection.

### MicroScan offers a broad choice of panel formats:

- › Conventional overnight panels
- › Rapid ID panels
- › ESβL *plus* panels
- › MICroSTREP *plus* panels
- › Specialty ID panels

## The Fewest FDA Limitations

MicroScan panels also offer the fewest FDA limitations available and adhere to all major microbiology standards organizations, including CLSI and EUCAST. Maximize your workflow flexibility with a choice of three testing options:

- › ID-only panels
- › AST-only panels
- › ID/AST panels

*“MicroScan gives us an identification along with many different antibiotics on a single panel. For us, that is a major plus because we have 25 hospitals. One hospital will use one antibiotic and another hospital will choose a different one within the same class. The single MicroScan panel with its extensive menu of antibiotics allows us to test virtually every possible combination that our hospitals need.”*

James Clark, M.T. (ASCP), Microbiology Manager,  
Alverno Clinical Laboratories

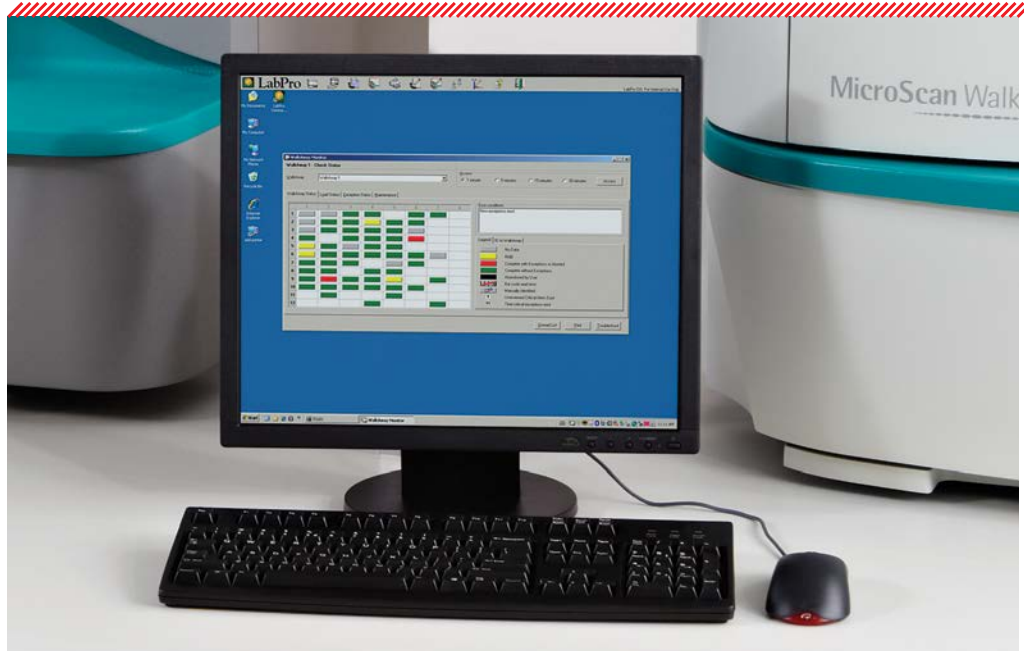
**MicroScan panels provide superior accuracy in detection of CRE, carbapenemase resistant Enterobacteriaceae, a CDC- and globally identified health risk.<sup>2,5,6</sup>**



# MAKE ACCURATE RESULTS ACTIONABLE

*"I love LabPro Connect, it made a real difference particularly in our unusually shaped laboratory, where we used to be bunched up to read results from the MicroScan computer. We can now read results, resolve exceptions, and reorder panels from wherever we are sitting, saving us time and eliminating congestion."*

Angela Beth Prouse,  
MS, M.T. (ASCP),  
Clinical Microbiologist,  
Peninsula Regional  
Medical Center



## LabPro Software Suite

Enhanced data management with our LabPro software suite improves lab efficiency by streamlining workflow and making information about patient care easily accessible. Collectively, LabPro Manager, LabPro Connect, and LabPro Alert<sub>EX</sub> help you standardize and consolidate testing regimens, accommodate versatile results reporting, and expand your ability to identify emerging resistance.

### LabPro Information Manager

- › Powerful management of microbiology results, from order to LIS transmission, increases efficiency.
- › Easy-to-use and customizable software provides customers with the flexibility to make results actionable.

### LabPro Alert<sub>EX</sub>

- › Provides automated detection of atypical results for quick reporting.
- › Fully customizable software allows use of alternate break points when interpreting MIC results.
- › Directs staff to the most appropriate action based on customized institutional procedures.

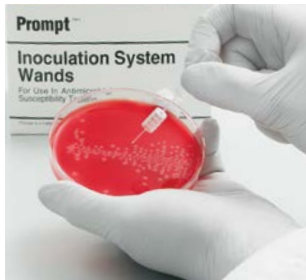
### LabPro Connect

- › Manage identification and antibiotic susceptibility testing (ID/AST) data right from your laboratory workstation.
- › Consolidate data from multiple testing systems for epidemiology and other management reports right in your laboratory office.
- › Choose between open or closed systems on your laboratory local area network (LAN).

# STREAMLINE YOUR WORKFLOW

## PROMPT™ Inoculation System and RENOK Rehydrating Inoculator

Simultaneously inoculate all 96 wells of MicroScan ID, AST, and Combo panels.



### Select colonies with PROMPT

Standardize inocula without time-consuming turbidity using the PROMPT Inoculation System.



### Prepare inoculum with PROMPT

Inoculum stability up to four hours allows for flexibility in the workflow.



### Inoculate panel with RENOK

Simultaneous inoculation of all 96 wells of the panel simplifies the workflow.



### Get results with the MicroScan System

Use the LabPro Suite of software for customizable data analysis and management.

**MicroScan Panel  
GuiDe<sup>7</sup> and Biotype  
Lookup Program  
online tools help  
streamline your panel  
selection and provide  
24/7 access to our  
powerful database of  
atypical organisms.**



# DISCOVER THE SMART CHOICE IN AUTOMATION

## The Smart Microbiology Automation Solution

Discover what Beckman Coulter can offer you. Visit [www.beckmancoulter.com/microbiology](http://www.beckmancoulter.com/microbiology) to see how our microbiology automation is benefiting laboratories and improving patient care.

### Pre-analytical

### Analytical



Specimen  
Collection



Specimen  
Processing



Rapid ID

#### Copan ESwab™

- › Standardizes collection of diverse specimen types (sputum, blood, urine, stool).
- › Only liquid-based multipurpose system that maintains viability of aerobic, anaerobic, and fastidious bacteria.
- › Facilitates automation and elutes samples in seconds.

#### Copan WASP: Walk-Away Specimen Processor®

- › Automates all core aspects of microbiology specimen processing.
- › Dual-streaking capability allows customers to streak two specimens on one plate, providing cost savings.
- › Modular design allows future addition of new modules, including automated conveyor track.

#### Bruker MALDI™ Biotyper System

- › Rapid isolate identification complements ID/AST testing on the MicroScan WalkAway plus Microbiology System.
- › Highly accurate and applicable to a wide range of microorganisms.
- › Cost-effective and much faster than traditional methods.



*“For me personally, it’s extremely rewarding and exciting to be at the forefront of what’s happening in microbiology automation. Partnering with MicroScan is helping us reduce costs and improve the consistency of work. The Microbiology Automation Solution we are implementing will help support our future growth.”*

Dale Kahn, M.T. (ASCP), Central Laboratory Operations Director,  
Alverno Clinical Laboratories

## Post-analytical



ID/AST

Informatics

### **MicroScan WalkAway plus Microbiology System**

- › Delivers gold-standard accuracy for microorganism identification and susceptibility testing.
- › Enables simultaneous processing of conventional, rapid, and specialty panels on a single, automated platform.
- › Delivers accurate emerging resistance detection for the toughest pathogens, including VISA, VRSA, and MRSA.

### **LabPro Information Management Systems**

- › Powerful data management of lab test results, from order to LIS transmission, increases efficiency in busy and complex laboratories.

# SPEED AND ACCURACY FROM MicroScan SYSTEMS



To learn  
more, visit:

[www.beckmancoulter.com/  
microbiology](http://www.beckmancoulter.com/microbiology)

## Accuracy Is Speed

The MicroScan WalkAway *plus* systems use real MIC technology to provide the accurate results that laboratories need to operate efficiently.

## Accurate Solutions for Every Lab

MicroScan systems are available in three sizes:

- › autoSCAN-4 system
- › MicroScan WalkAway 40 *plus*
- › MicroScan WalkAway 96 *plus*

## Resistance Detection Done Right

Available panel types for use with MicroScan systems include:

- › Conventional panels
- › Rapid ID panels
- › Specialty ID panels
- › MICroSTREP *plus* panels
- › ESβL *plus* panels

## Make Accurate Results Actionable

Our advanced software programs—LabPro Information Manager, LabPro Connect, and LabPro Alert<sup>EX</sup>—are flexible and adaptable to unique laboratory requirements and provide crucial alerts and suggestions about atypical results in real time.

## Streamline Your Workflow

With sophisticated tools to support efficient workflow, including the PROMPT Inoculation System and the RENOK Rehydrating Inoculator, MicroScan systems help you get the quick and accurate results you need.

## The Smart Choice in Microbiology Automation

The Smart Microbiology Automation Solution combines the proven accuracy of the MicroScan product family with the powerful workflow efficiencies of the Copan WASP<sup>®</sup> system and the Bruker MALDI Biotyper system.

# AN EXTENSIVE ORGANISM IDENTIFICATION DATABASE

## Gram Positives

### Staphylococcus and Related Genera

*Kocuria kristinae*  
*Listeria monocytogenes*  
Micrococcus and related genera  
(Micrococcus species)  
*Rothia dentocariosa*  
*Rothia mucilaginosa*  
*Staphylococcus aureus*  
*Staphylococcus auricularis*  
*Staphylococcus capitis* ss. *capitis*  
*Staphylococcus capitis* ss. *ureolyticus*  
*Staphylococcus cohnii* ss. *cohnii*  
*Staphylococcus cohnii* ss. *urealyticum*  
*Staphylococcus epidermidis*  
*Staphylococcus haemolyticus*  
*Staphylococcus hominis* ss. *hominis*  
*Staphylococcus hominis* ss. *novobiosepticus*  
*Staphylococcus hyicus*  
*Staphylococcus intermedius*  
*Staphylococcus lugdunensis*  
*Staphylococcus saprophyticus*  
*Staphylococcus schleiferi* ss. *coagulans*  
*Staphylococcus schleiferi* ss. *schleiferi*  
*Staphylococcus sciuri*  
*Staphylococcus simulans*  
*Staphylococcus warneri*  
*Staphylococcus xylosus*

### Streptococcaceae

*Aerococcus urinae*  
*Aerococcus viridans*  
*Enterococcus avium*  
*Enterococcus casseliflavus*  
*Enterococcus durans/hirae*  
*Enterococcus faecalis*  
*Enterococcus faecium*  
*Enterococcus gallinarum*  
*Enterococcus raffinosus*  
*Gemella* species  
*Leuconostoc* species  
*Pediococcus* species  
*Rhodococcus equi*  
*Streptococcus agalactiae* (Group B)  
*Streptococcus anginosus* group  
*Streptococcus bovis* group  
*Streptococcus dysgalactiae*  
*Streptococcus equi*  
*Streptococcus iniae*  
*Streptococcus mitis/oralis*  
*Streptococcus mutans*  
*Streptococcus parasanguis*  
*Streptococcus pneumoniae*  
*Streptococcus pyogenes* (Group A)  
*Streptococcus salivarius*  
*Streptococcus sanguis*

## Gram Negatives

### Glucose Fermenters

*Aeromonas hydrophila* group  
*Cedecea davisae*  
*Cedecea lapagei*  
*Cedecea neteri*  
*Cedecea* species 3  
*Cedecea* species 5  
*Chromobacterium violaceum*  
*Chryseobacterium indologenes*  
*Chryseobacterium meningosepticum*  
*Citrobacter amalonaticus*  
*Citrobacter freundii* complex  
*Citrobacter koseri*  
*Edwardsiella tarda*  
*Enterobacter aerogenes*  
*Enterobacter amnigenus* 1  
*Enterobacter amnigenus* 2  
*Enterobacter asburiae*  
*Enterobacter cancerogenus*  
*Enterobacter cloacae*  
*Enterobacter gergoviae*  
*Enterobacter intermedius*  
*Enterobacter sakazakii*  
*Escherichia coli*  
*Escherichia fergusonii*  
*Escherichia hermannii*  
*Escherichia vulneris*  
*Ewingella americana*  
*Hafnia alvei*  
*Klebsiella oxytoca*  
*Klebsiella ozaenae*  
*Klebsiella pneumoniae*  
*Klebsiella rhinoscleromatis*  
*Kluyvera ascorbata*  
*Kluyvera cryocrescens*  
*Leclercia adecarboxylata*  
*Leminorella* species  
*Moellerella wisconsinensis*  
*Morganella morganii*  
*Pantoea agglomerans* group

### Glucose Non-fermenters

*Acinetobacter baumannii*  
*Acinetobacter haemolyticus*  
*Acinetobacter Iwoffii*  
*Alcaligenes xylosoxidans* ss. *xylosoxidans*  
*Alcaligenes* species  
*Bergeyella zoohelcum*  
*Bordetella bronchiseptica*  
*Burkholderia cepacia*  
*Burkholderia pseudomallei*  
*Chryseobacterium indologenes*  
*Chryseobacterium meningosepticum*  
*Delftia acidovorans*  
*Empedobacter brevis*  
*Moraxella* species/*Psychrobacter* species  
*Myroides* species  
*Ochrobactrum anthropi*  
*Oligella ureolytica*  
*Pasteurella multocida*  
*Pasteurella-Actinobacillus* species

*Pasteurella aerogenes*  
*Pasteurella multocida*  
*Pasteurella-Actinobacillus* species  
*Plesiomonas shigelloides*  
*Proteus mirabilis*  
*Proteus penneri*  
*Proteus vulgaris*  
*Providencia alcalifaciens* 1-2  
*Providencia rettgeri*  
*Providencia rustigianii*  
*Providencia stuartii*  
*Providencia stuartii urea* (+)  
*Raoutella ornithinolytica*  
*Salmonella choleraesuis*  
*Salmonella paratyphi A*  
*Salmonella* species  
*Salmonella typhi*  
*Salmonella-Arizona*  
*Serratia fonticola*  
*Serratia liquefaciens*  
*Serratia marcescens*  
*Serratia odorifera* 1  
*Serratia odorifera* 2  
*Serratia plymuthica*  
*Serratia rubidaea*  
*Shigella sonnei*  
*Shigella* species  
*Tatumella tyseos*  
*Vibrio alginolyticus*  
*Vibrio cholerae*  
*Vibrio damsela*  
*Vibrio fluvialis*  
*Vibrio hollisae*  
*Vibrio mimicus*  
*Vibrio parahaemolyticus*  
*Vibrio vulnificus*  
*Yersinia enterocolitica* group  
*Yersinia pestis*  
*Yersinia pseudotuberculosis*  
*Yersinia ruckeri*  
*Yokenella regensbergi*

*Pseudomonas aeruginosa*  
*Pseudomonas fluorescens/*  
*Pseudomonas putida*  
*Pseudomonas luteola*  
*Pseudomonas oryzae*  
*Pseudomonas stutzeri*  
*Pseudomonas* species  
*Ralstonia pauca*  
*Ralstonia pickettii*  
*Rhizobium radiobacter*  
*Shewanella putrefaciens*  
*Sphingobacterium multivorum*  
*Sphingobacterium spiritivorum*  
*Sphingomonas paucimobilis*  
*Stenotrophomonas maltophilia*  
*Vibrio* species SF  
*Weeksella virosa*  
*Yersinia pseudotuberculosis*

### References

1. Applies only to countries using FDA panels. Data on file.
2. Bulik CC et al. J Clin Microbiol. 2010 July; 48(7): 2402–2406.
3. Gallon O et al. J Clin Microbiol. 2011 June; 49(6): 2269–2271.
4. U.S. IMV ServiceTrak™ data 2004-2012 [ID-AST] [2013].
5. Anderson KF et al. J Clin Microbiol. 2007 August; 45(8): 2723–2725.
6. Woodford N et al. J Clin Microbiol. 2010 August; 48(8): 2999–3002.
7. Currently available in the U.S.
8. U.S. IMV ServiceTrak™ data 2004-2010 [ID-AST] [2013].

Not all products available in all countries.

Beckman Coulter, the stylized logo, autoSCAN, MicroScan, MicroScan plus, MicroSTREP plus, RENOK and WalkAway are trademarks of Beckman Coulter, Inc. and are registered in the USPTO. Lab Forward, LabPro and Alert Ex are trademarks of Beckman Coulter, Inc.

WASP, WASP Walk Away Specimen Processor and ESwab are registered trademarks or trademarks of Copan Italia SpA.

MALDI Biotyper is the property of Bruker Daltronik GmbH.

PROMPT is a registered trademark of 3M.

All other trademarks are the property of their respective owners.

**For Beckman Coulter's worldwide office locations and phone numbers, please visit [www.beckmancoulter.com/contact](http://www.beckmancoulter.com/contact)**

